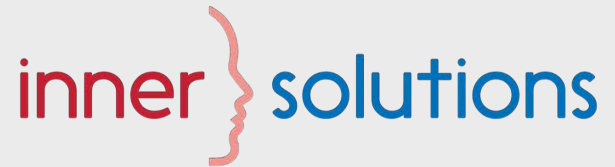
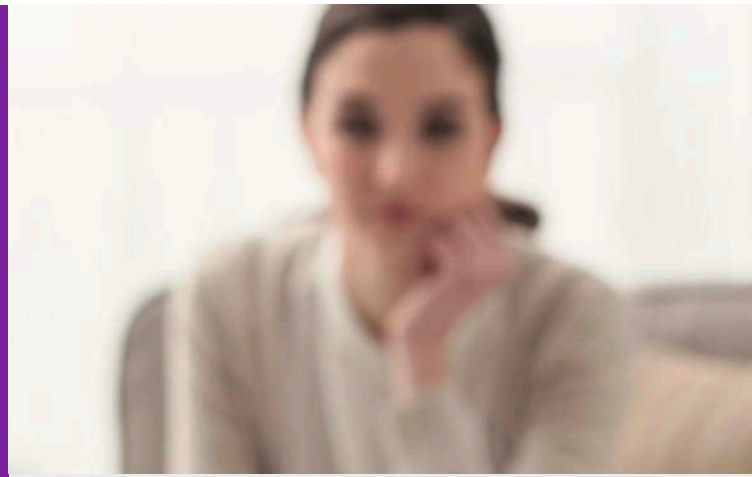


Psychological Assessment Services

Complete **psychological** or
psychoeducational assessment



What is a psychological or psychoeducational assessment?

A psychological or psychoeducational assessment is a process of gathering information that helps to understand how an individual learns and processes information.

Assessments can be completed with **children, adolescents, and adults** to potentially identify what might be impacting academic, social, occupational, or overall psychological well-being.

An assessment includes standardized tests (e.g., intelligence tests, tests of academic achievement), observations, rating scales, detailed history, and consultation. The process may lead to identification of language or learning disabilities, attention and behavior-related disorders (e.g., ADHD), executive functioning and self-regulation deficits, intellectual disabilities, giftedness, or mood and anxiety disorders.

Assessment can provide a profile of individual cognitive strengths and areas of need that we can use collaboratively to develop a plan to succeed in the classroom, at work, and in everyday life.

How to get started?

- Advise your therapist at Inner Solutions™ Ltd. (if applicable)
- Contact Inner Solutions™ Ltd. and someone will contact you directly
- Self-referral (online or by phone)

What can a psychological assessment do for you?

An assessment may provide:

- details about your learning, processing, and emotional and behavioral profile
- insights into needed changes
- new strategies and accommodations to improve different areas of life, including learning or your therapy progress

A profile of your strengths and areas of need—or an identified disability—is useful in developing accommodations and obtaining supports and resources at school and in the community.

Assessment may also assist with identifying individuals who may be eligible for certain educational placements (e.g., gifted and talented education, private schools, etc.), funding, or government benefits (e.g., AISH, PDD).

The Assessment Process

Our assessment psychologist will contact you directly to explain the full process, explore your goals for the assessment, and to set up an intake interview and obtain relevant history.

Assessment occurs one-on-one and frequently requires several two- to three-hour sessions.

The assessment may include obtaining information from school personnel and other professionals, with consent from you.

At the end of the assessment, a feedback meeting will be scheduled to review the results and recommendations.

If applicable, the psychologist will also be available to consult with you or your child's school to provide classroom recommendations or during the development of individual program plans (IPPs).

Depending on the referral question and the needs of the client, the assessment process takes 6-8 weeks (on average) from intake to final report.

Please note, consent from a parent/guardian is required for clients under the age of 18 wishing to seek assessment.

Program Fees

Please visit innersolutions.ca for details. Appointment times are flexible with your schedule, including evenings and weekends.

Fees may be recouped via receipts by a health insurance benefits provider or can be used as a medical expense against income taxes.

Payment

We accept Visa, Mastercard, American Express, Cheque, cash, or e-transfer.

Assessments can be completed with **children, adolescents, and adults** to potentially identify what might be impacting their academic, social, occupational, or overall psychological well-being.

Inner Solutions™ Mission

To understand and to help...by providing empirically supported treatments and evidence-based practices with compassion and expertise. We help clients **learn it, live it, and lend it™**.



Contact Us

Inner Solutions™ Ltd.
Sloane Square (East of Chinook Mall)
#101, 5920 - 1A Street SW
Calgary, AB T2H 0G3

Main: (403) 301-3399

Fax: (403) 208-1726

Online: www.innersolutions.ca

inner } solutions